

# DA 50 Air Supply Unit

For broiler houses



Climate for Growth

# High Output at low Air Velocity

SKOV has developed an air intake, which combines a high output with a low air velocity in the birds' zone. The solution is a new air supply unit, which fundamentally breaks the known principles for air supply units.

The DA 50 Air Supply Unit is supplied in two sizes with different output. The DA w50-920 performs up to 18,000 m<sup>3</sup>/h and the DA 50-650 performs up to 10,000 m<sup>3</sup>/h at 40 Pa negative pressure. These high performances are obtained without using a fan in the unit.



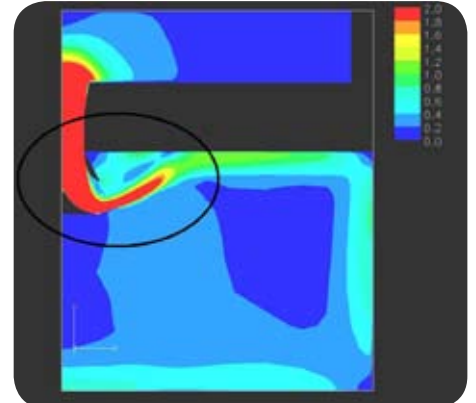
## No Draught in the Birds' Zone

The unique feature of the DA 50 Air Supply Unit is the high output combined with low air velocity in the birds' zone. These two things have previously been conflicting.

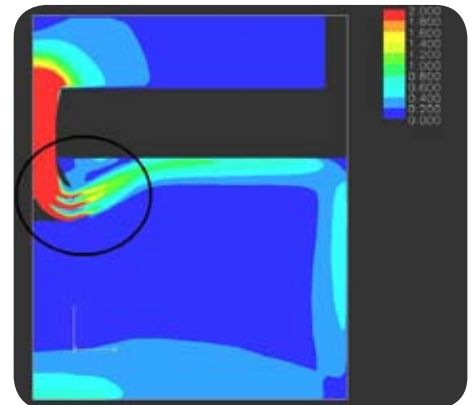
SKOV has solved the problem by using several air distribution plates, which lead out the air in several air flow layers and distribute the air optimally in the birds' zone.

During the warm periods when the cooling effect of the air velocity is required, the DA 50 Air Supply Unit gives a high output with high air velocity at full opening.

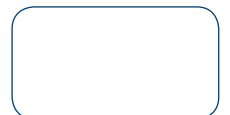
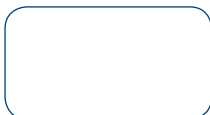
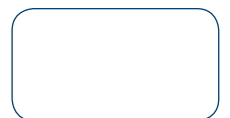
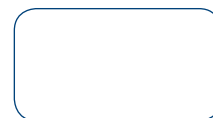
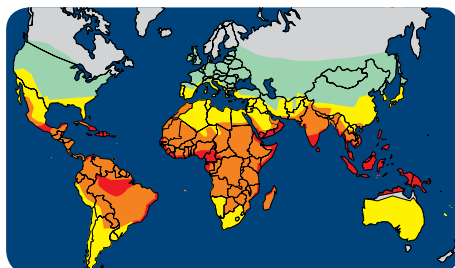
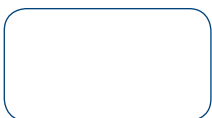
The well-being of the birds is improved as they are not exposed to unintended draught in their area in spite of the high output. With this the productivity and the producer's earnings are improved.



*One air jet – high air velocity at air intake and in the birds' zone*



*Two or more air jets – low air velocity at air intake and in the birds' zone*





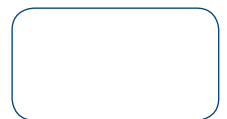
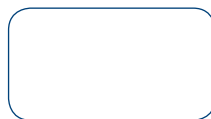
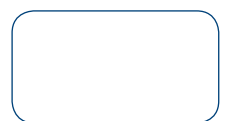
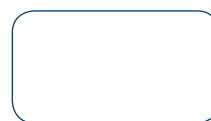
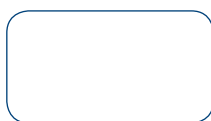
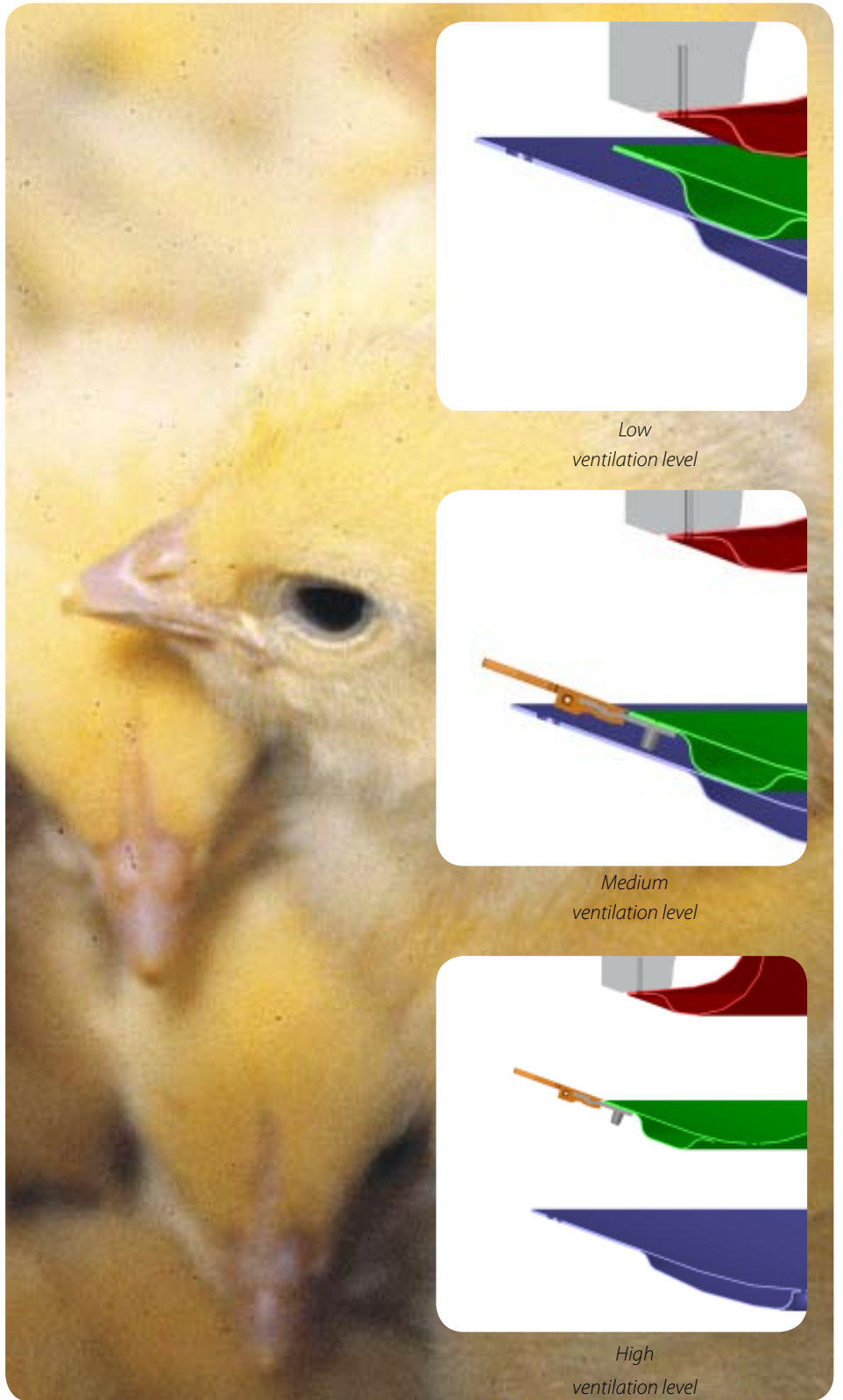
## Uniform Distribution at 100% stepless Regulation

Former air supply units have been characterized by very simple regulation systems.

A new parallel motion system has been developed for the DA 50 Air Supply Unit, which ensures that the air supply unit is opened uniformly all over the unit. This ensures a uniform air distribution in the whole house.

The 100% stepless regulation of the gap also ensures that the system can be adjusted to the exact air jet range that is required during the period of the year concerned.

As it is known from wall inlets, the air jet is led towards the ceiling so that the Coanda-effect is utilized optimally in the entire regulating range.



## DA 50 for Markets with special Demands for the Air Intake

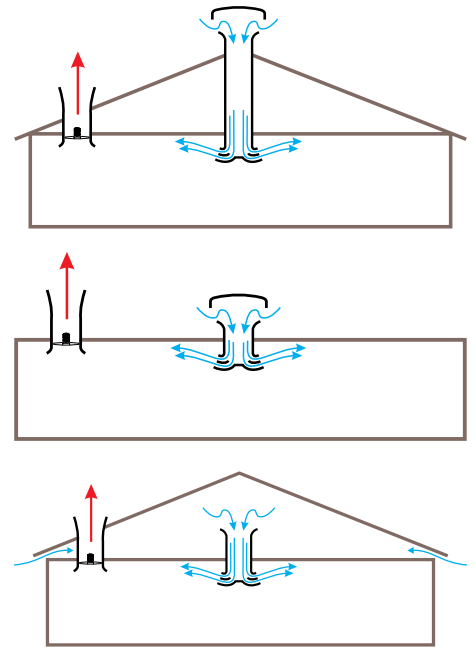
The DA 50 Air Supply Unit is, among other things, developed with a special reference to application in livestock house complexes in Sweden and Eastern Europe, which make special demands on the air intake.

In Sweden there is a demand for air intake above the roof in order to reduce the risk of infection and in both Sweden and Eastern Europe the constructional form is characterized by the individual houses being built together, which makes the application of traditional wall inlets impossible. In addition, a flat roof construction of concrete makes it impossible to use ceiling inlets in Eastern Europe.

## Can be adapted to all conventional Types of Buildings

The DA 50 Air Supply Unit is a flexible construction that is put together of several individual components.

The unit is developed with a complete duct series, which ensures that the unit can be mounted in all types of livestock house buildings.



SKOV supply climate and production management systems for animal production the world over. Our solutions are technologically advanced, user friendly and individually adapted to meet the needs of our customers.

SKOV A/S • Hedelund 4 • DK-7870 Roslev  
Tel. +45 72 17 55 55 • info@skov.com • www.skov.com

20110505 . ©2011, SKOV

 **SKOV**  
Climate for Growth