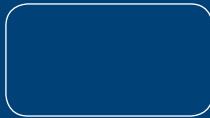


**NEW**



# FarmOnline



*Climate for Growth*

## Access to data at the right time and place

FarmOnline® is a management tool which SKOV has developed for use by the still larger pig and poultry farms. The system ensures the producer the highest possible yield from his production facility. Farm-Online® is able to monitor several house computers from a central location and present the collected data graphically.

## Fast, competent action

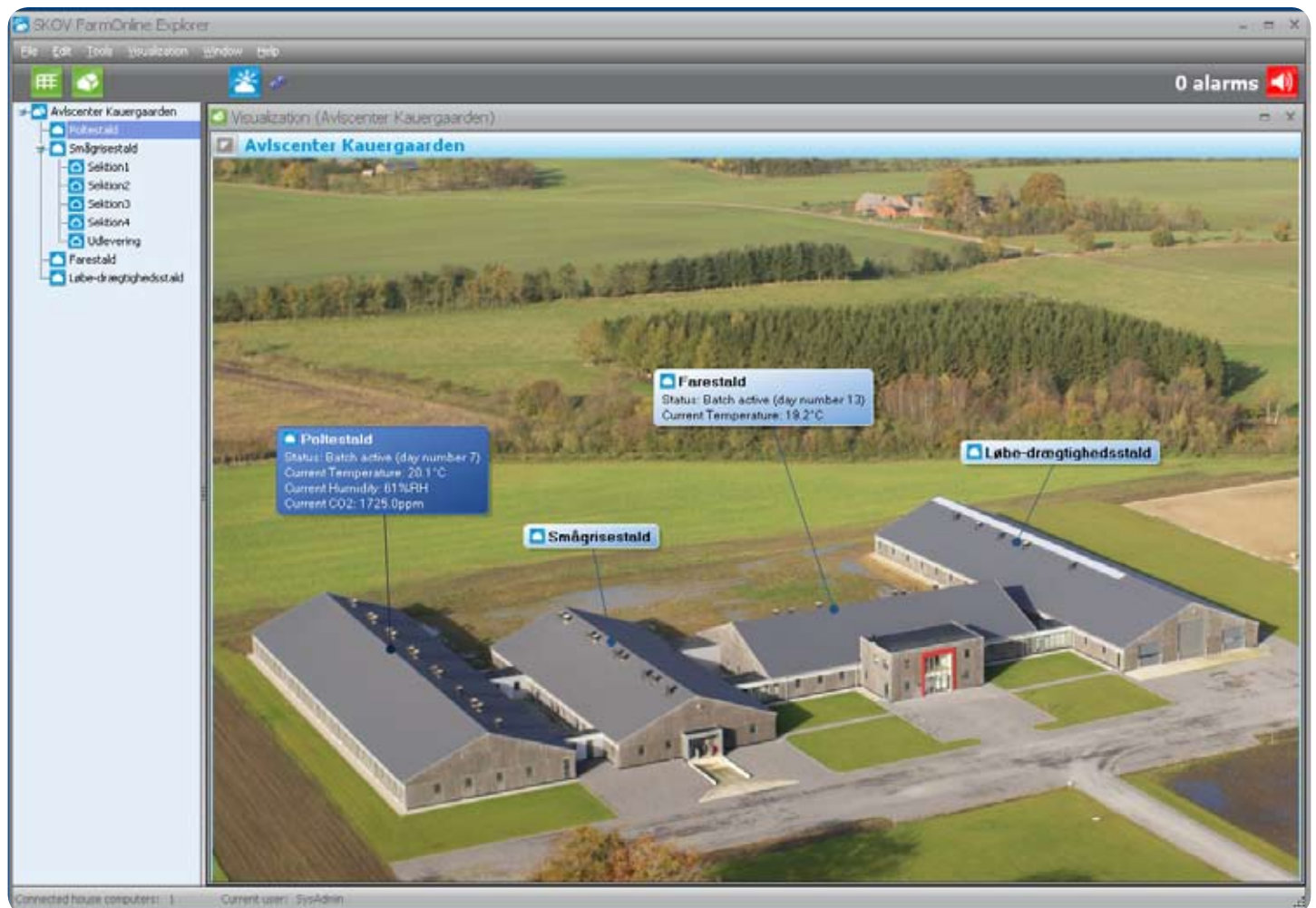
SKOV's new generation of house computers has a built-in LAN Ethernet. It is, there-

fore, not necessary to collect data between house computers and a PC thanks to the live connection of FarmOnline® to all house computers on the farm.

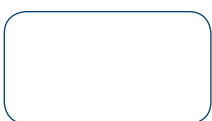
The system also makes it possible for the producer to react immediately to an alarm and, if required, change the house computer setup via FarmOnline®. When an alarm is generated, the producer can react quickly and efficiently. Quick action may ensure the welfare of the animals as well as reduce or completely prevent financial losses.

### FarmOnline® properties

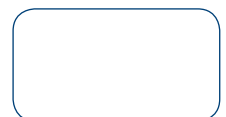
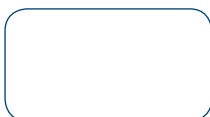
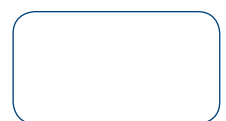
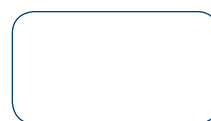
- Live connection to house computers – through 100 megabits LAN Ethernet
- Remote control of house computers
- Fast data overview – graphically or via tables
- Detailed alarm log, history and analysis
- Communication via the FarmOnline® WebLink to older house computers
- Common IT standard makes it possible to communicate with other systems
- Optimised user interface with icons and graphic elements



The user interface of FarmOnline® integrates icons and graphical elements to a great extent, so the user quickly can form a general view of the current display image and get to the essential data in the concerned situation.



A World of  
customised  
Solutions

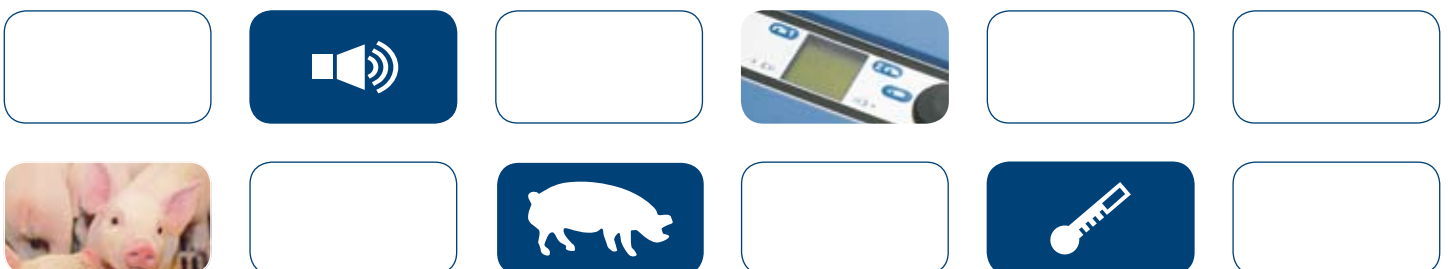


Where	Status	Batch day	Current Temperature	Current Humidity	Ventilation requirement
<b>Grønnegård</b>					
Drægtighedsstald	🏠	---	20,5°C	83%RH	87%
Løbeafdeling	🏠	---	21,4°C	77%RH	84%
Førestald - Sektion1	🏠	---	21,2°C	76%RH	88%
Førestald - Sektion2	🏠	---	20,9°C	78%RH	88%
Førestald - Sektion3	🏠	---	20,9°C	76%RH	92%
Førestald - Sektion4	🏠	---	21,2°C	79%RH	91%
Smågrisestald-1 - Sektion1	🏠	---	21,0°C	76%RH	88%
Smågrisestald-1 - Sektion2	🏠	---	21,2°C	81%RH	84%
Smågrisestald-1 - Sektion3	🏠	---	20,6°C	75%RH	91%
Smågrisestald-1 - Sektion4	🏠	---	21,2°C	79%RH	86%
Smågrisestald-2 - Sektion1	🏠	---	21,0°C	77%RH	84%
Smågrisestald-2 - Sektion2	🏠	---	21,4°C	76%RH	85%
Smågrisestald-2 - Sektion3	🏠	---	21,4°C	80%RH	83%
Smågrisestald-2 - Sektion4	🏠	---	21,4°C	84%RH	85%
Slagtesvin - Sektion1	🏠	---	21,0°C	80%RH	84%
Slagtesvin - Sektion2	🏠	---	21,4°C	81%RH	87%
Slagtesvin - Sektion3	🏠	---	21,0°C	84%RH	89%
Slagtesvin - Sektion4	🏠	---	20,7°C	80%RH	91%

Tabular summary including status and the essential key figures.

The Alarm survey window displays a table of alarms with columns for Type, Category, Alarm, Where, and When. A pop-up window shows details for a 'Service unavailable' alarm, including the location (Grønnegård), when it occurred (27-10-2008 14:34:51), and when it was restored (27-10-2008 17:29:14). Another pop-up shows a 'Too high temperature' alarm with details on the inside temperature exceeding the high temp. limit.

Alarm survey with pop-up.



## Visualisation

FarmOnline® is able to import the producer's own photos and drawings of the farm and sections, ensuring high graphic recognisability in the program.

So-called hotspots can be added to the overview pictures to show the key values for indoor temperatures, alarm status, etc. Adding graphic features for all levels (farm, house, section) will make it easy for the producer to navigate in the program, ensuring fast overview of conditions and accurate localisation of deviations.

## Overview

The overview function enables alternative reading of key values and alarm and house status for the entire farm and for individual sections.

The producer chooses which values to be included in the overview function. Tables can be exported to other file formats such as PDF, Microsoft Excel, etc. for documentation or analysis.

## Alarms

Alarms are shown by means of a pop-up function, no matter which program is active on the PC. FarmOnline® displays alarms as red markings. Simply click the marking to open an alarm window with alarm details. Users authorised for this may acknowledge the alarm. Notes on alarm causes, troubleshooting, etc. can also be added to each alarm.

The Log and Diagram functions contain various search criteria making it possible to analyse the occurrence of historic alarms, thus adding to the experience of the users.

In addition to alarms from SKOV house computers, FarmOnline® is also able to handle alarms from external units.

To get a complete picture, alarms can also be entered manually into the FarmOnline® History function.

## Climate

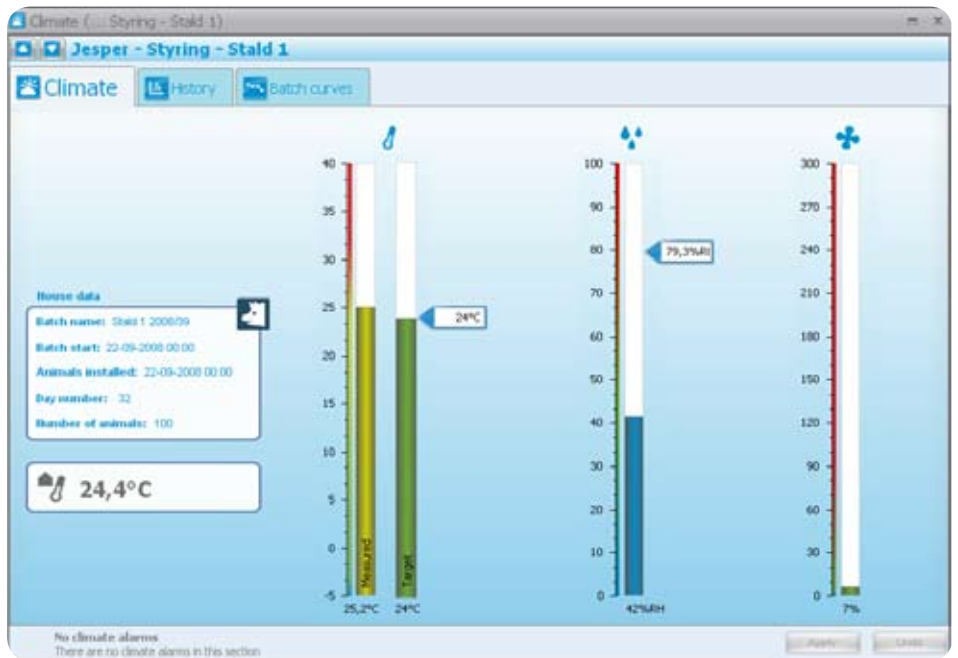
Once the producer has become familiar with the various overview screens, the climate screen makes it possible to go deeper into the climate control function.

Selected key values for temperature, humidity and ventilation are displayed by means of easily comprehensible graphic elements in which settings can be changed directly. Batch curves are also accessible for houses with all in/out production.

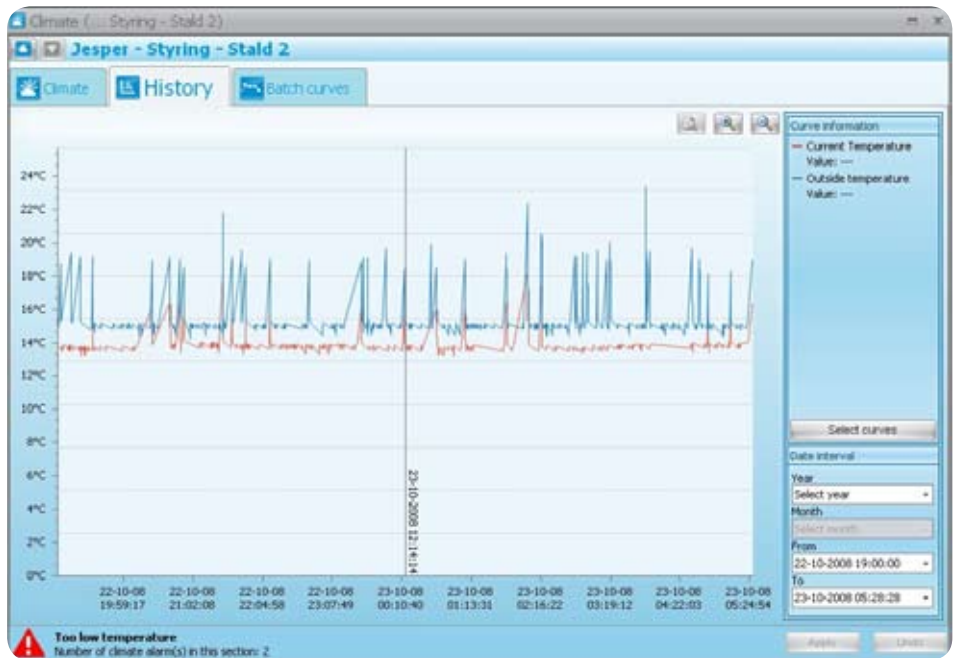
The efficient Climate History function of FarmOnline® allows data storage for up to five years. Several search criteria enable requested data to be extracted and indicated in the form of curves.

## Standard

FarmOnline® uses the new IT standard for this industry sector which Danish Pig Production has developed in cooperation with the sector. This makes it possible to communicate with other systems, thus enabling the producer to get an overview of the various systems through FarmOnline®.



The settings of the climate computer.



Climate history.



FarmOnline



act



innovate



cooperate



SKOV supply climate and production management systems for animal production the world over. Our solutions are technologically advanced, user friendly and individually adapted to meet the needs of our customers.

SKOV A/S • Hedelund 4 • DK-7870 Roslev  
Tel. +45 72 17 55 55 • info@skov.com • www.skov.com

620251-20081030 . ©2008, SKOV

**SKOV**

Climate for Growth